







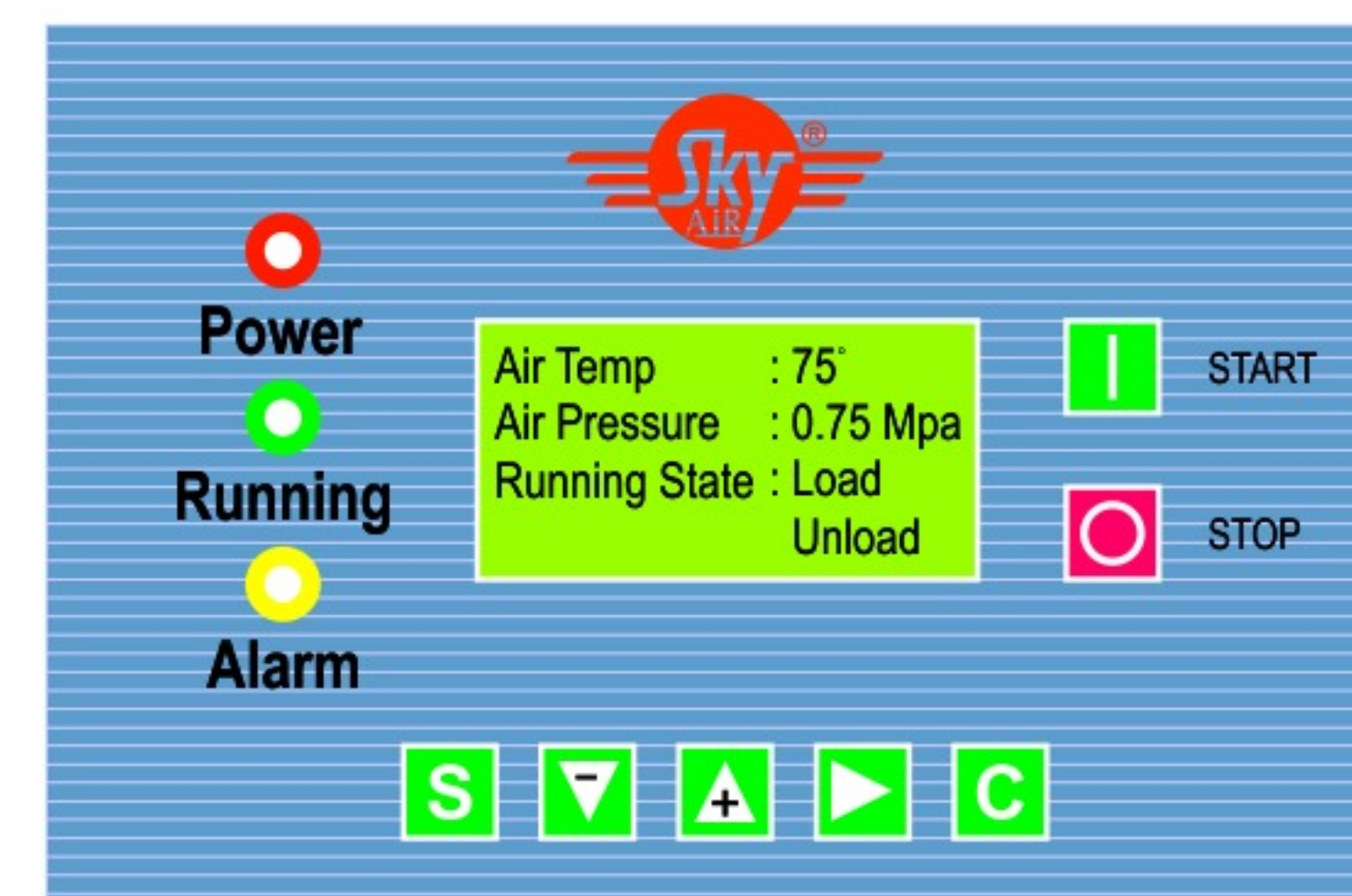
EVERYTHING IS POSSIBLE



- Screw Air Compressors
- Refrigerated Air Dryer
- Air Receiver Tank & Filters
- Reciprocating Air Compressors

CONTROLLER FUNCTION

-  **AUTOMATIC ALARM** : Service alarm, High temperature alarm High voltage and Protection alarm.
-  **PROTECTION** : Revers phase, Motor overload, Lack phase, High discharge temperature, Over & under voltage and High Current.
-  **ENERGY SAVERS** : To save energy It can automatically load / unload running with OFF after 3-5 minutes running on unloading.
-  **HISTORY RECORD** : Total run time, Total load time and Fault history.

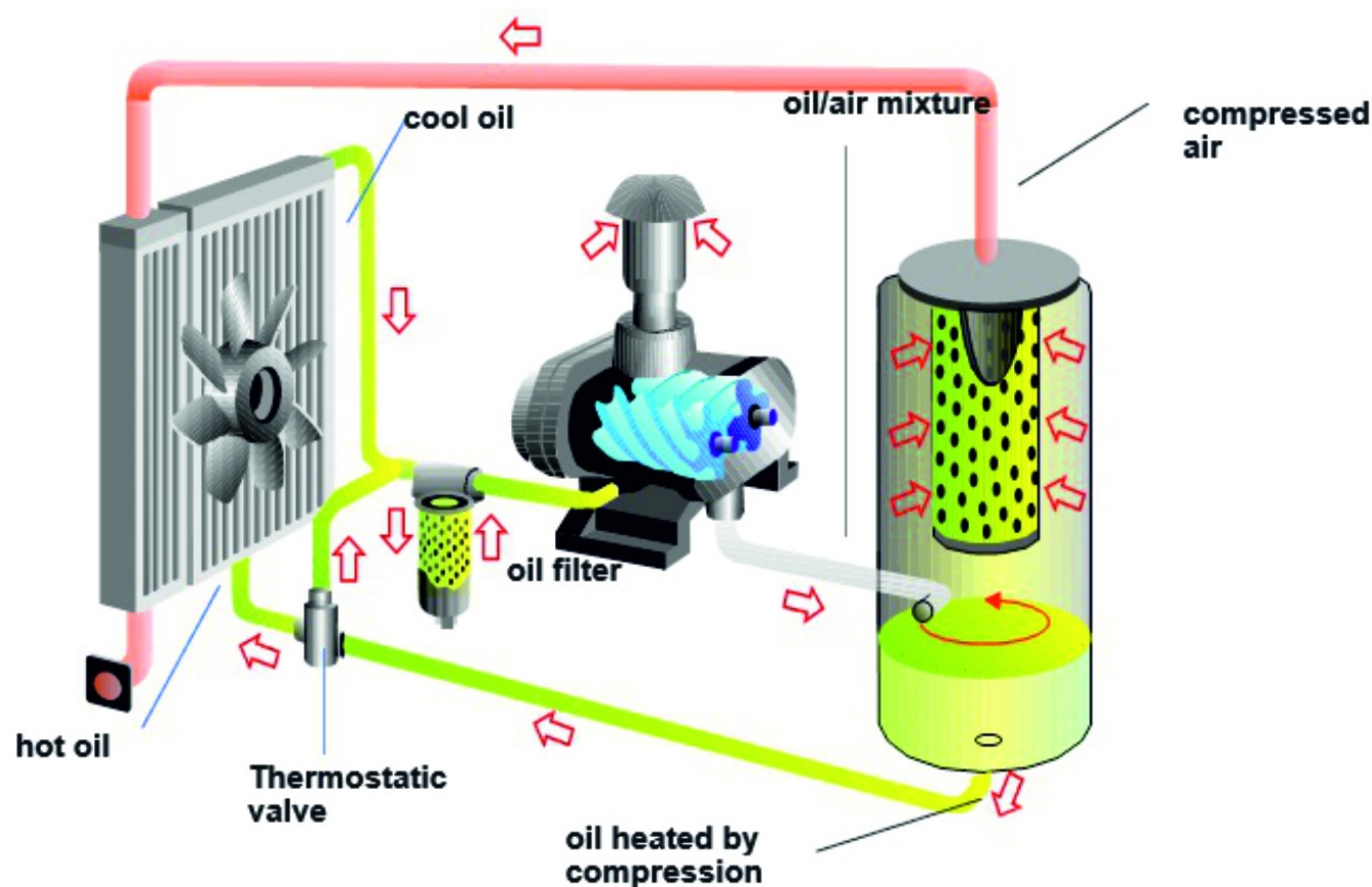


ELECTRIC MOTOR

Special modified electric motor, compressor package is driven by an industry standard TEFC (Totally Enclosed Fan Cooled) with IP 54 protection, squirrel cage motor, ensure highest quality standards for winding and high quality for continues and trouble free operation.

AIR INTAKE VALVE

Newly designed air intake valve operated by solenoid valve, the new intake is very good it is designed to remove the problem of throwing oil back from the air filter.



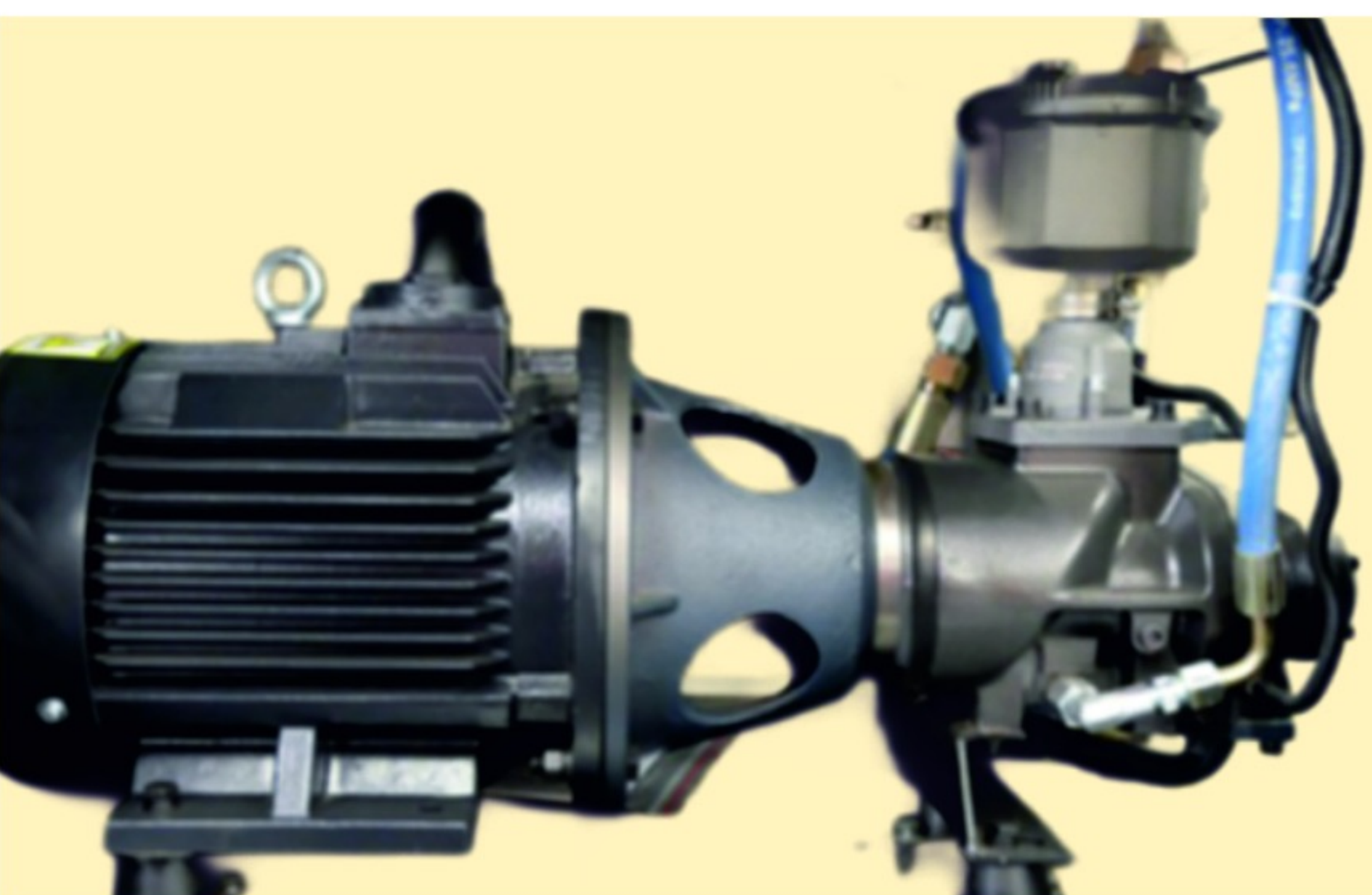
COOLING SYSTEM

20-30% Bigger Sized cooler provides high cooling efficiency in Max. Ambient temperature Cooling fan Operated automatically according to oil temperature to reduce energy cost, structure, designed to easy 'to maintain al combined cooler.



GEARLESS DIRECT DRIVE SCREW AIR COMPRESSOR

At low speed RPM Large Air end more efficient then high speed Air ends, delivery more compressed air for same drive power, Lower speed means increased efficiency and durability with reduced compressed air cost, less wear & less maintenance cost.



COMPRESSOR PACKAGES



Air Compressor

Air Receiver

Dryers

Line Filter

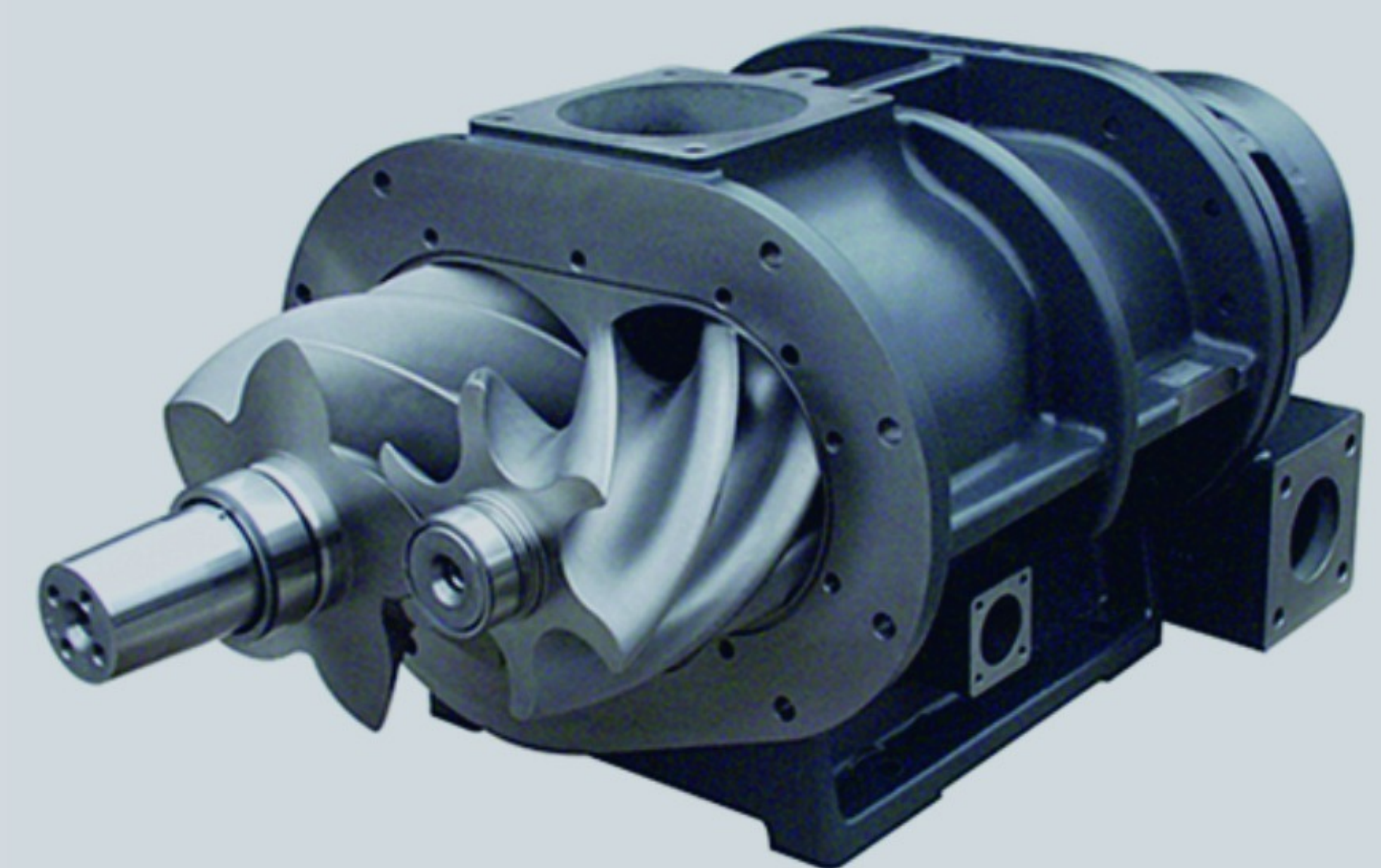
SEAMLESS STEEL PIPE & COMPRESSION FITTINGS

In order to cost saving general air compressor manufacturer used flexible tube in internal pipelines system. But air compressor cannot be avoided operating conditions : oil, temperature and pressure causing accelerated aging in hose, SKY AIR could be using compression fitting of seamless steel pipe fitting to prevent pipeline leaks, while reducing oil line pressure loss.



WHY US :

- Easy Maintenance with more space.
- High Efficiency Low Speed Air end.
- Easy Operated screen display with alarm.
- Advance Cooling system with automatic temperature sensor fen.
- All steel pipe & fitting.
- Simple start data panel.
- Low noise level.
- Low cost spare part.
- Gearless & Direct Drive.



DIRECT DRIVE SCREW AIR COMPRESSOR

MODEL	MOTOR KW	PRESSURE IN BAR	M3/MIN	RELATED FAD CFM	NOISE IN DB	WEIGHT (KG)
SA10	7.5	7.5	1.31	46.3	60	240
		8.5	1.12	39.6		
		10.5	0.95	33.5		
SA15	11	7.5	1.90	67.1	61	400
		8.5	1.65	58.3		
		10.5	1.43	50.5		
SA20	15	7.5	2.65	96.6	61	410
		8.5	2.55	90.1		
		10.5	2.25	79.5		
SA25	18	7.5	3.25	114.8	63	500
		8.5	3.15	111.2		
		10.5	2.79	98.5		
SA30	22	7.5	4.02	142.5	63	550
		8.5	3.79	134.9		
		10.5	3.39	120.8		
SA40	30	7.5	5.40	190.7	64	600
		8.5	5.10	180.1		
		10.5	4.60	162.4		
SA50	37	7.5	6.85	241.9	65	800
		8.5	6.25	220.7		
		10.5	5.65	199.5		
SA60	45	7.5	8.10	286.1	67	850
		8.5	7.75	273.7		
		10.5	7.05	249.5		
SA75	55	7.5	10.90	384.9	68	1660
		8.5	10.20	360.2		
		10.5	9.05	319.6		
SA100	75	7.5	13.70	483.8	69	1800
		8.5	13.40	473.2		
		10.5	11.80	416.4		

REFRIGERATED AIR DRYERS

MODEL	EXHAUST VOLUME		POWER (HP)	WORKING PRESSUR	WEIGHT (KG)
	LPM	CFM			
SA-7.5NF	1200	42.3	0.54	2 to 10 Bar	40
SA-10NF	2100	74.1	0.8	2 to 10 Bar	60
SA-20NF	2900	102.2	0.94	2 to 10 Bar	65
SA-30NF	4250	150	1.2	2 to 10 Bar	75
SA-50NF	5700	201	1.68	2 to 10 Bar	80
SA-60NF	7100	250	2	2 to 10 Bar	100



EVERYTHING IS POSSIBLE

SKY AIR COMPRESSOR PVT. LTD.

Sangaria Phanta, Salawas Road,
Jodhpur - 342 001 (Raj.) INDIA
www.skyaircompressor.com
info@skyaircompressor.com

OM SINGH RAJPUROHIT

+91 97845 45548
+91 74139 22555

HEERA LAL KUMAWAT

+91 98874 44400
+91 74139 22444